



EASTLAN
R A T I N G S

Instructions for loading data into the Radius software program from your email.

First make sure that the Radius software program is closed.
Now Click on the link in your email.

Eastlan Ratings- Your Radio Market Data

Dave Hastings [dhastings@eastlanratings.com]

Sent: Thu 5/27/2010 3:54 PM

To: hastings@eastlan.com

**Eastlan Ratings- Your Radio
Market Data**

Hello,

Dave Hastings (dhastings@eastlanratings.com) wants to share files with you. You can access these files by clicking the following link:

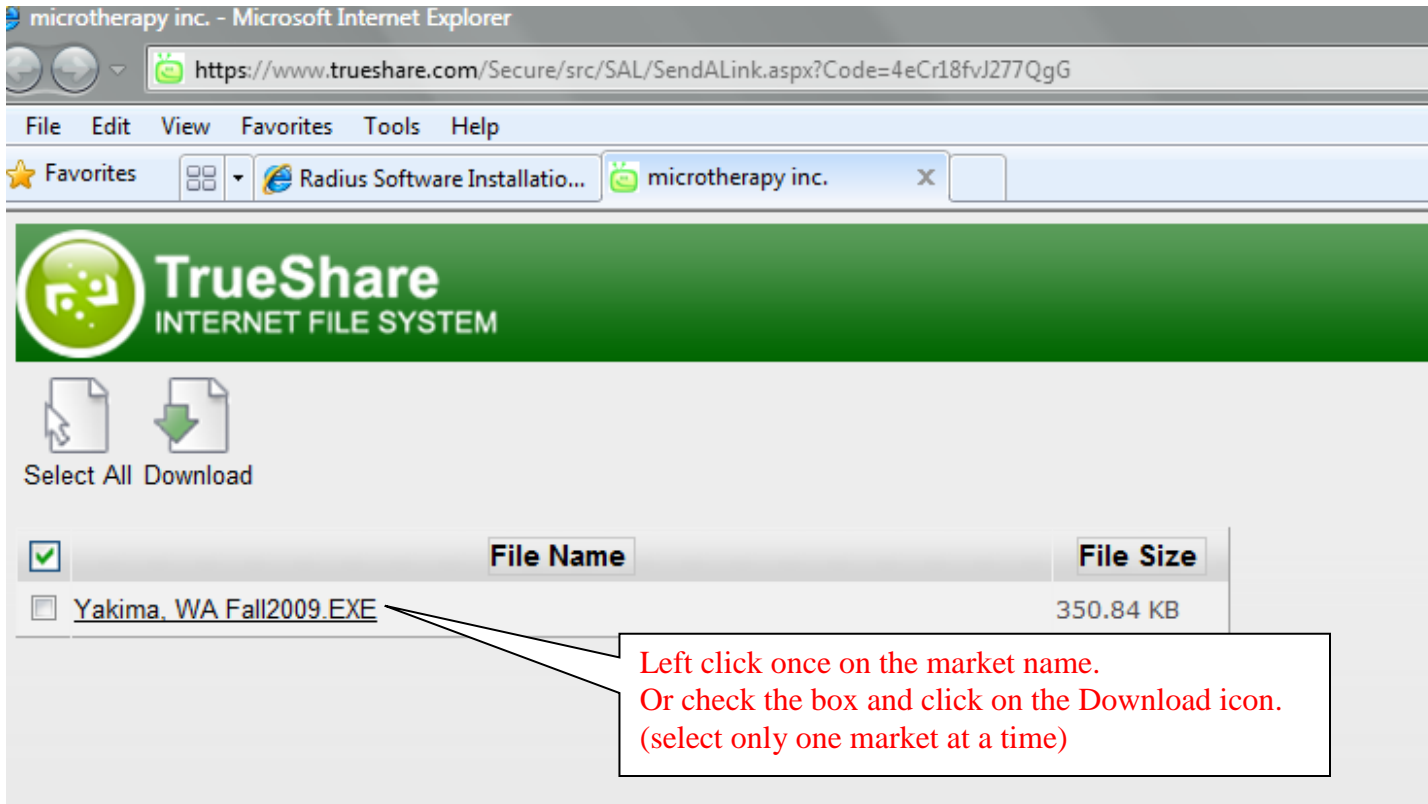
[Click here to download files](#)

They have included the following message for you:

Your radio ratings data

Click here
to begin
download.

The first window you will see will be the TrueShare download window.






microtherapy inc. - Microsoft Internet Explorer

https://www.trueshare.com/Secure/src/SAL/SendALink.aspx?Code=4eCr18fvJ277QgG

File Edit View Favorites Tools Help

★ Favorites Radius Software Installatio... microtherapy inc. x

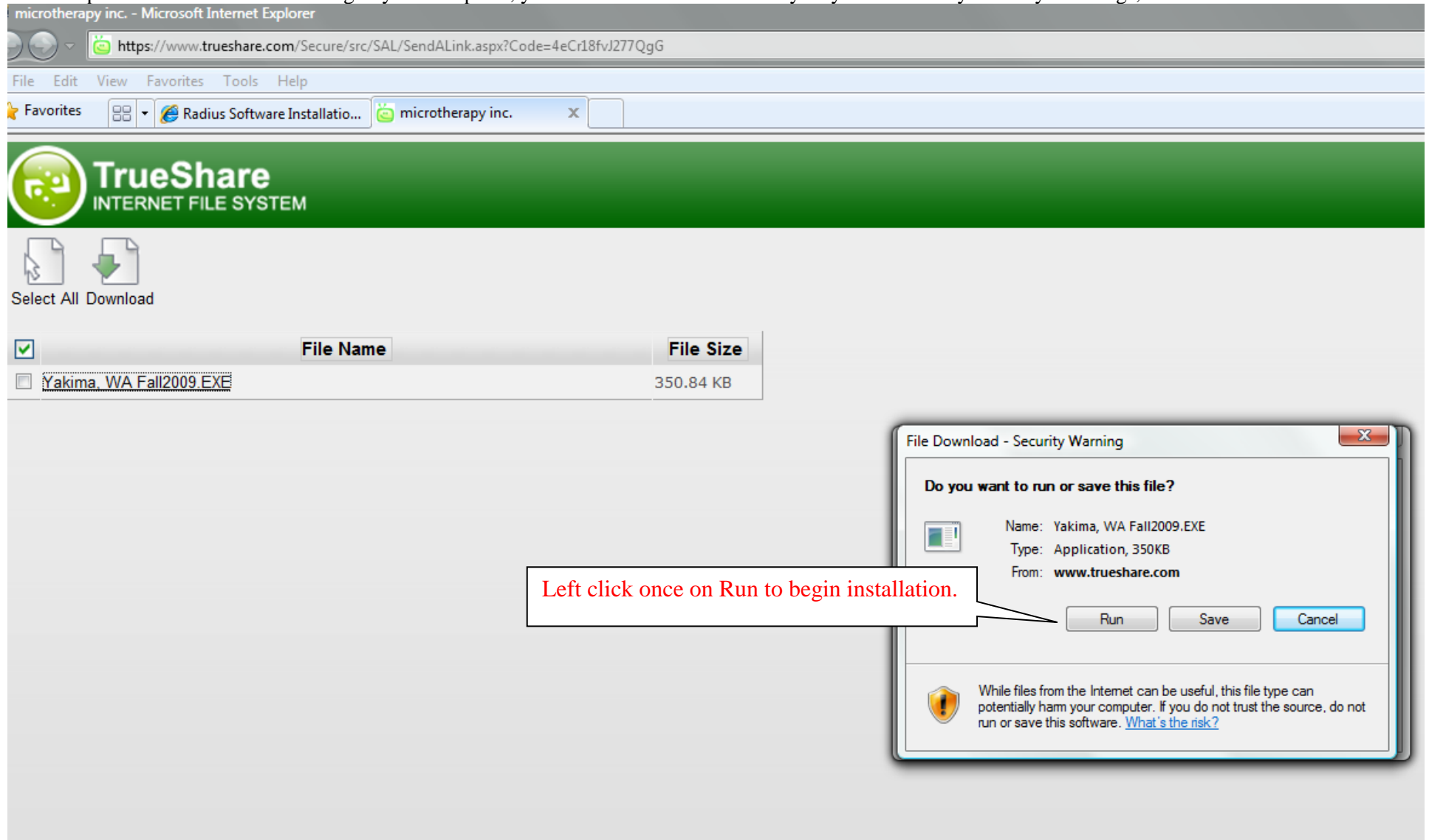
 **TrueShare**
INTERNET FILE SYSTEM

 
Select All Download

<input checked="" type="checkbox"/>	File Name	File Size
<input type="checkbox"/>	<u>Yakima. WA Fall2009.EXE</u>	350.84 KB

Left click once on the market name.
Or check the box and click on the Download icon.
(select only one market at a time)

The set up files will now be transferring to your computer; you will see this window briefly. If you receive any Security Warnings, select to continue Run.



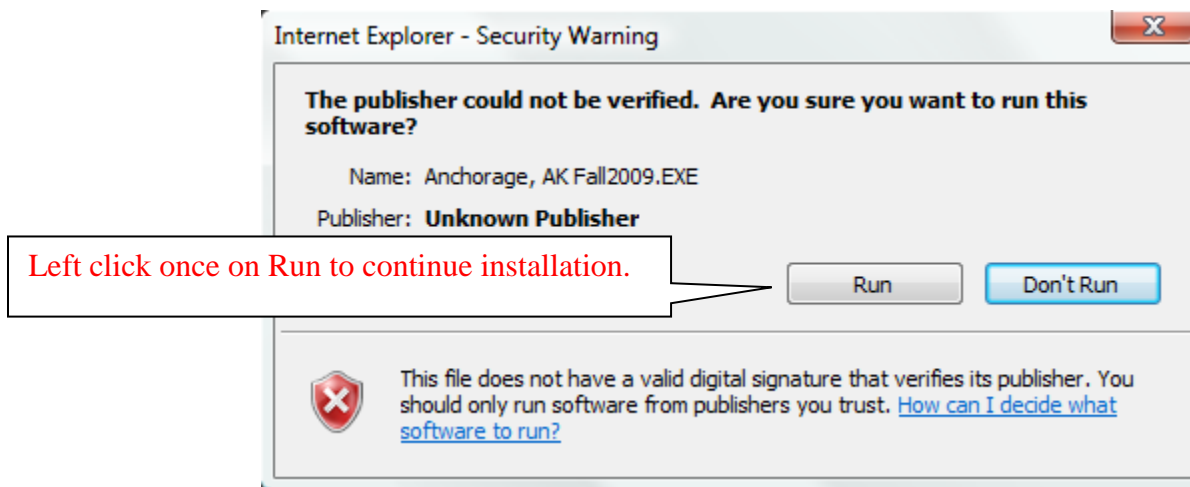
The screenshot shows a Microsoft Internet Explorer browser window displaying a TrueShare file download page. The address bar shows the URL: <https://www.trueshare.com/Secure/src/SAL/SendALink.aspx?Code=4eCr18fvJ277QgG>. The page header includes the TrueShare logo and the text "INTERNET FILE SYSTEM". Below the header, there are icons for "Select All" and "Download". A table lists the file being downloaded:

<input checked="" type="checkbox"/>	File Name	File Size
<input type="checkbox"/>	Yakima_WA Fall2009.EXE	350.84 KB

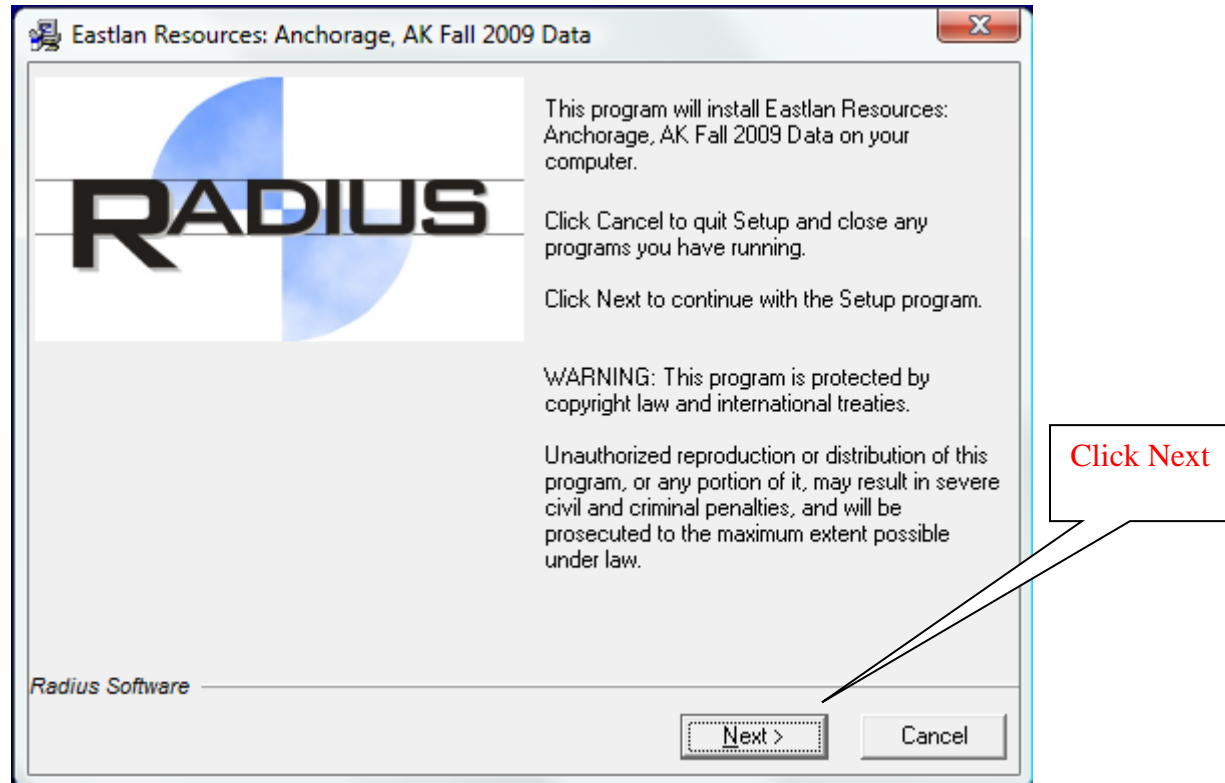
A "File Download - Security Warning" dialog box is overlaid on the page. It asks, "Do you want to run or save this file?" and provides the following information:

- Name: Yakima, WA Fall2009.EXE
- Type: Application, 350KB
- From: www.trueshare.com

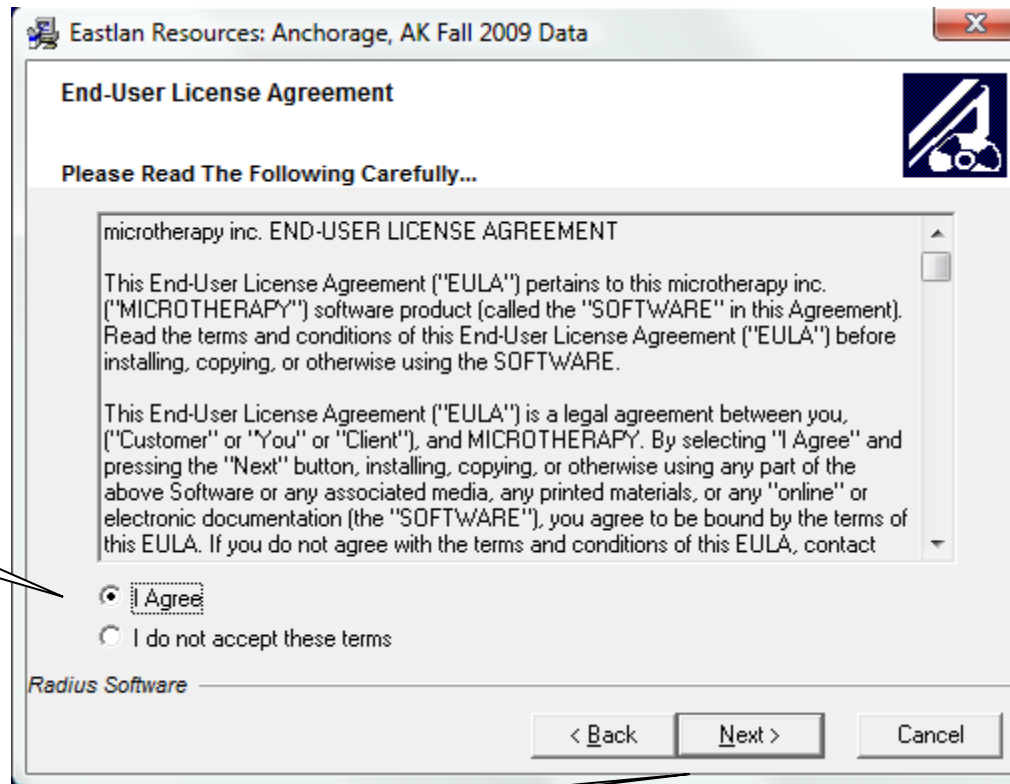
The dialog box has three buttons: "Run", "Save", and "Cancel". A red callout box points to the "Run" button with the text: "Left click once on Run to begin installation." Below the buttons, there is a warning icon and a message: "While files from the Internet can be useful, this file type can potentially harm your computer. If you do not trust the source, do not run or save this software. [What's the risk?](#)"



The following window will open to let you know that you are about to begin the installation process. Click Next.



1) Click I Agree, then 2) click Next.

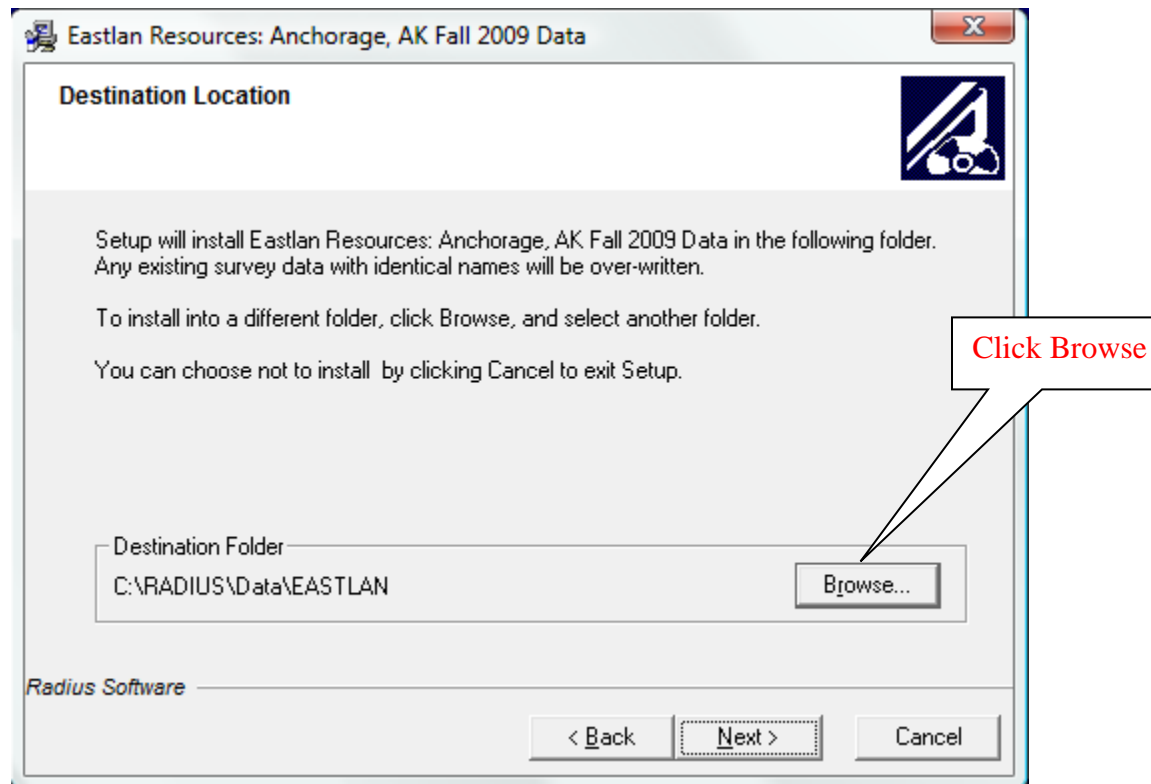


1) Click I Agree

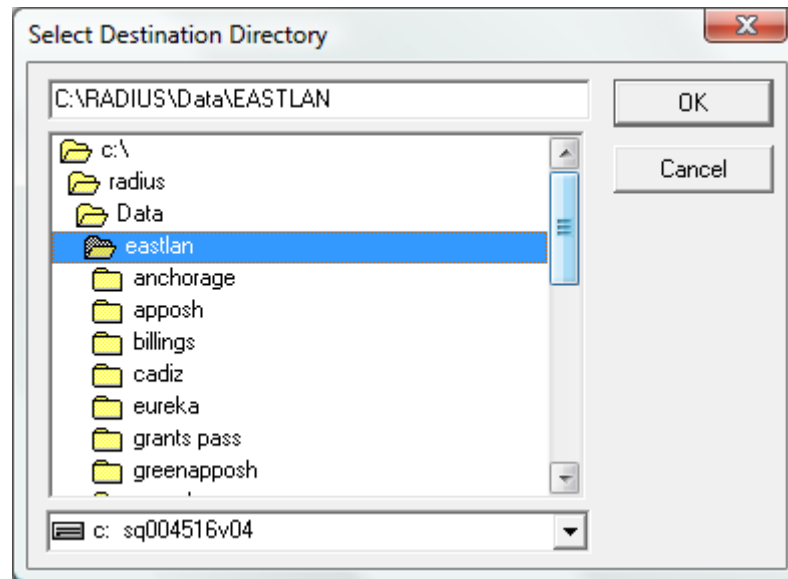
2) click Next



The next window, Destination Location is the most important part of the data installation.
Click on the Browse button.

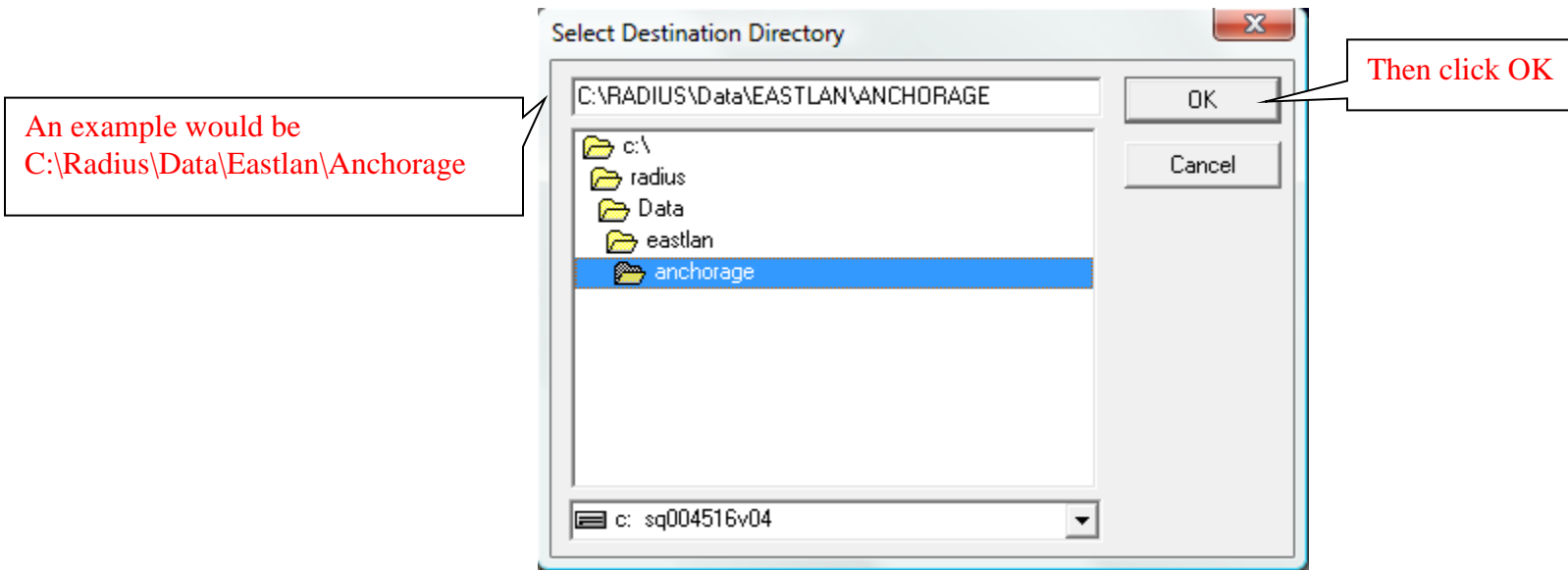


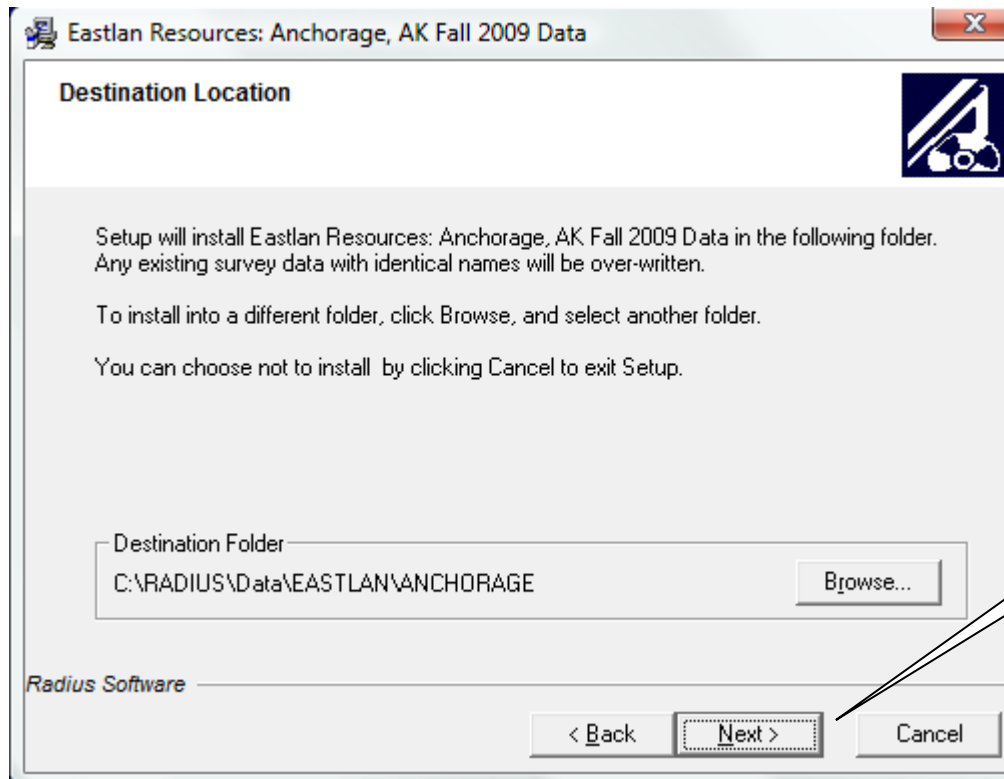
This will open the Select Destination Directory window.

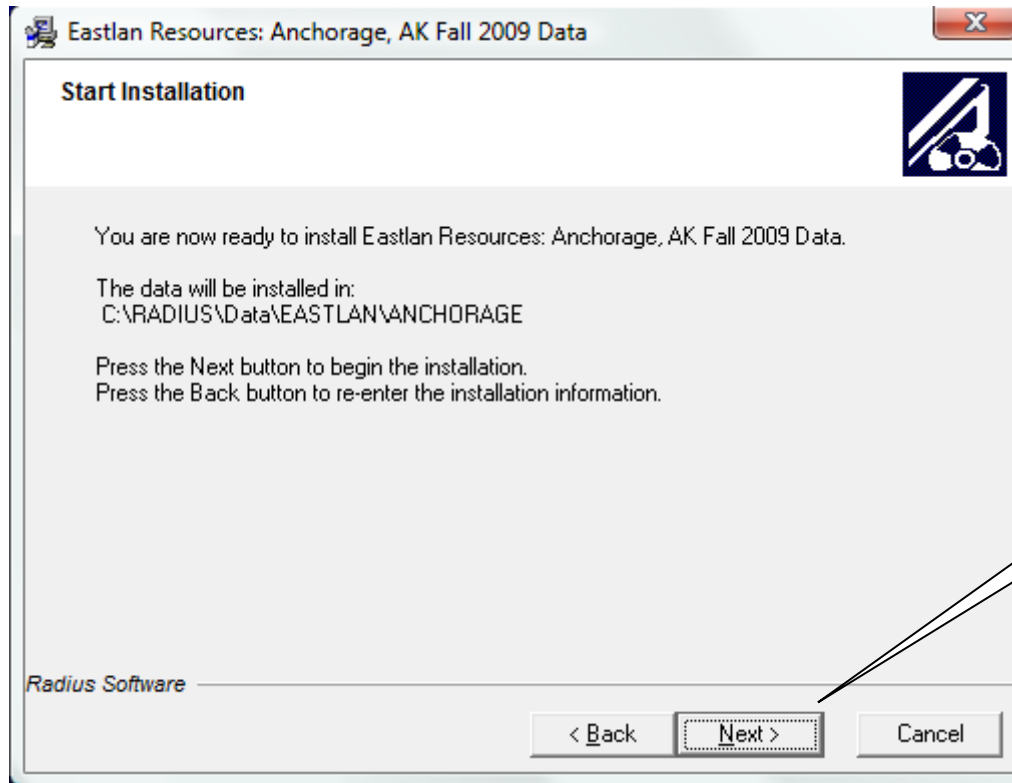


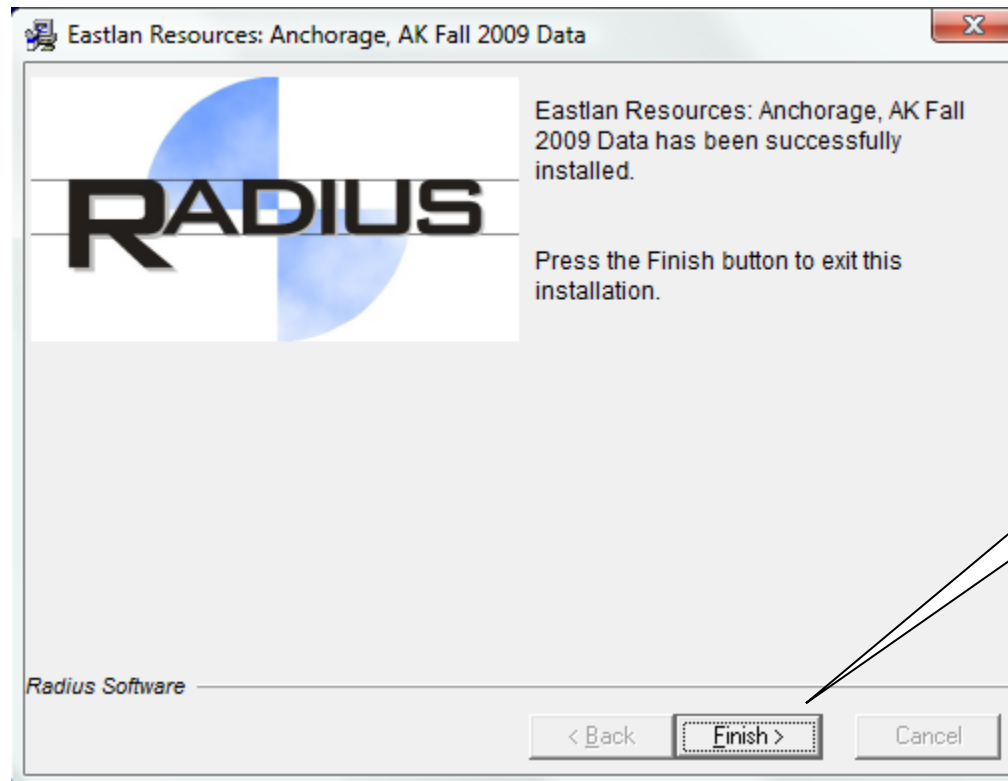
You now will create a path or directory to place your data. This path will need to include the following; C:\Radius\Data\Eastlan*your market name*. An example would be C:\Radius\Data\Eastlan\Anchorage.

The C:\Radius\Data\Eastlan\ is critical; the name you give to the market can be adjusted for space or for your easy reference. The back slash “\” after EASTLAN is required. Once the market name is entered, click OK.









After you Click Finish, your Eastlan Ratings data is now ready to use in Radius.