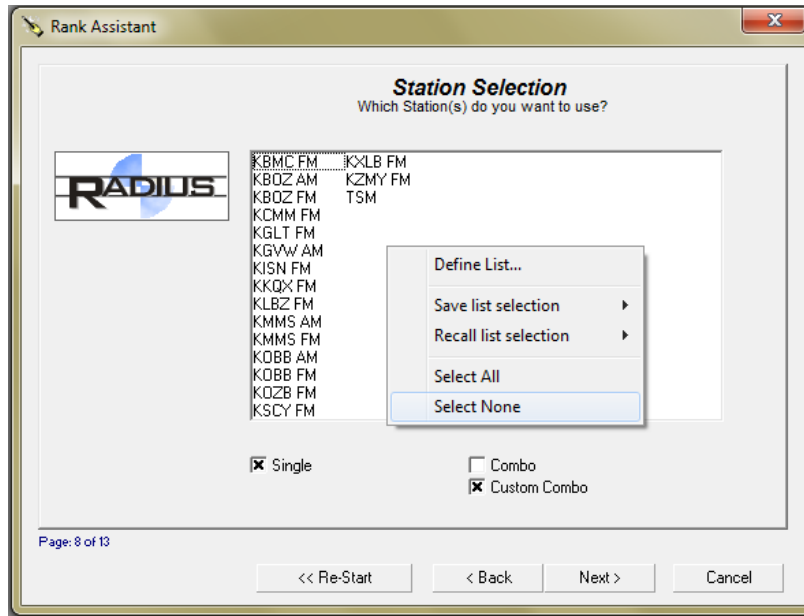



CUSTOM COMBINATIONS OF STATIONS

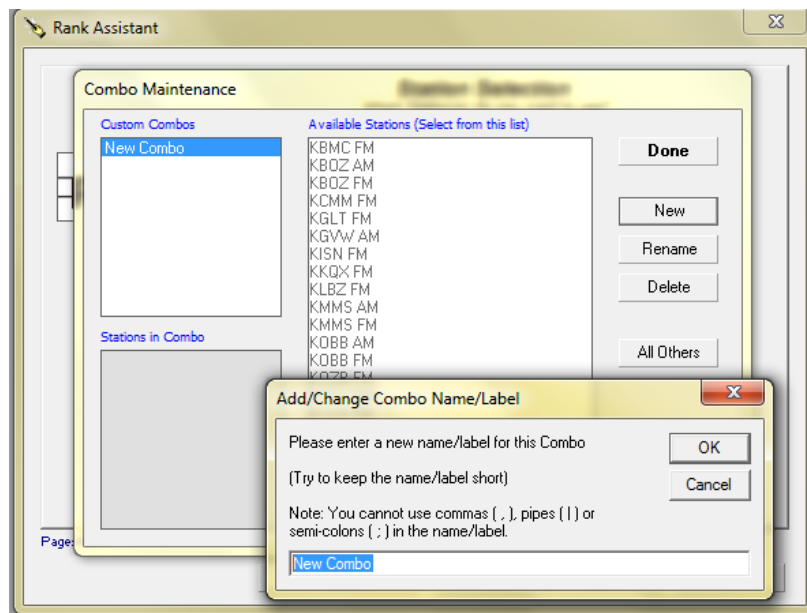
Using the Radius Wizard, on the Station Selection page, first check Custom Combo.

Then right click on the screen. This will bring up a menu; select Define List.

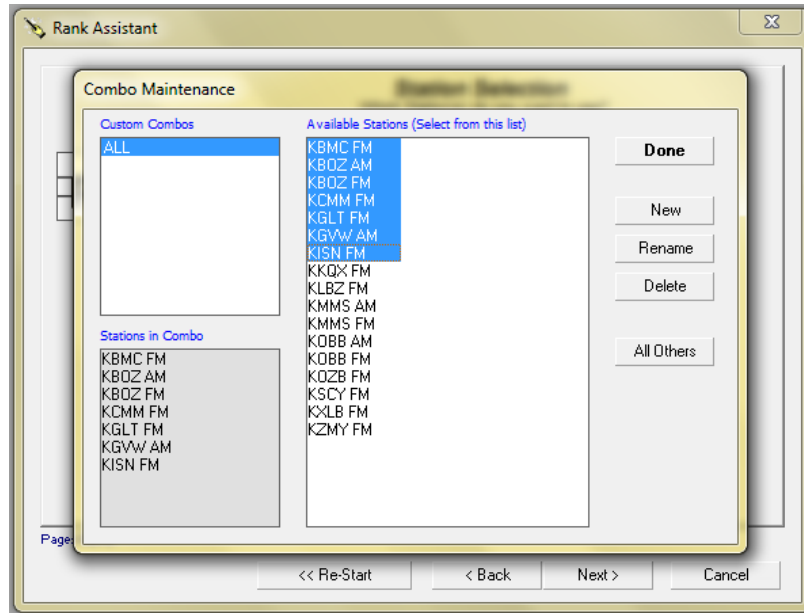


The Combo Maintenance window will come up; select the  button.

Now you can give your Combo a name; example All or Total, then click OK.



Now the Custom Combo name will be in the upper left hand corner of the Combo Maintenance. Click on the stations you wish to add to the Custom Combo you just named. The stations will be added in the lower left in the Stations in Combo field.



Once the stations have been added, click **Done**

Now your Custom Combo should appear on the list of stations in the Stations Selection window.

(Unchecking Custom Combo will remove your Combo off the list but will not delete it. Check Custom Combo to have your combo's appear.)

